

OSX networking utilities

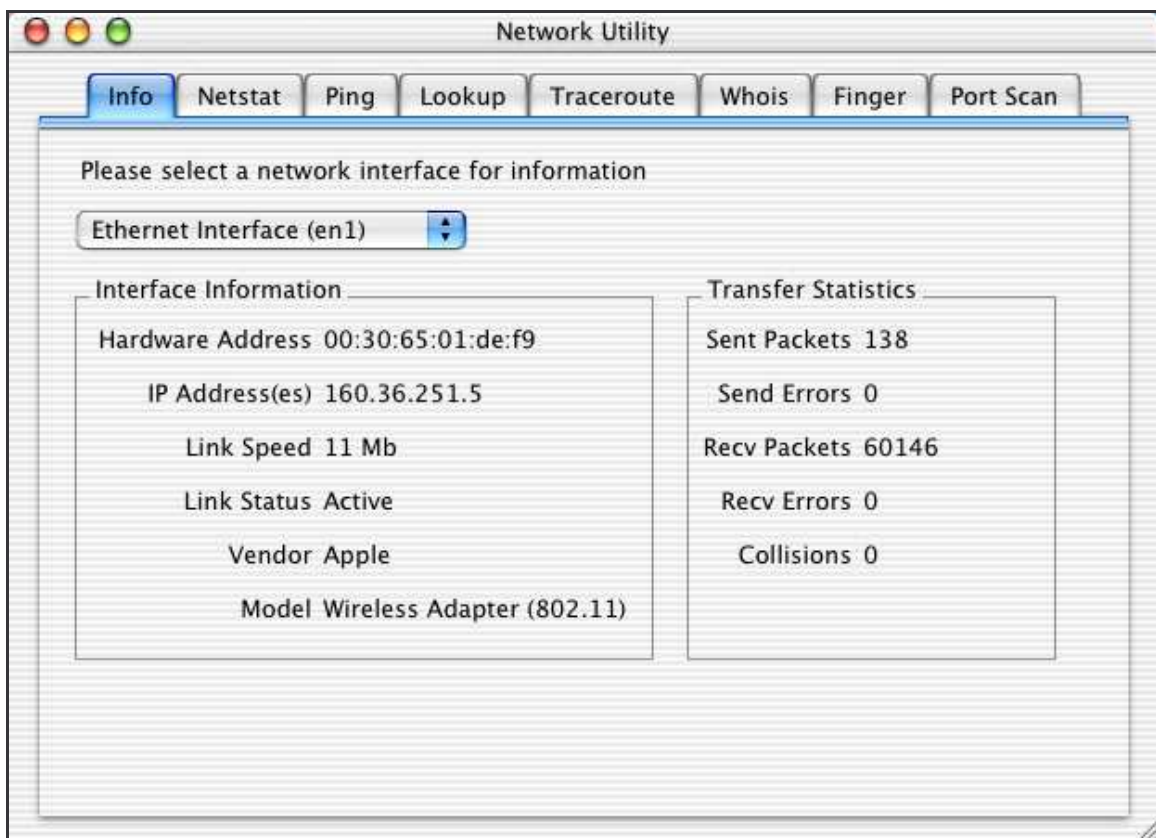
All of these utilities are located in the Utilities folder under Applications on the hard drive.

Network Utilities



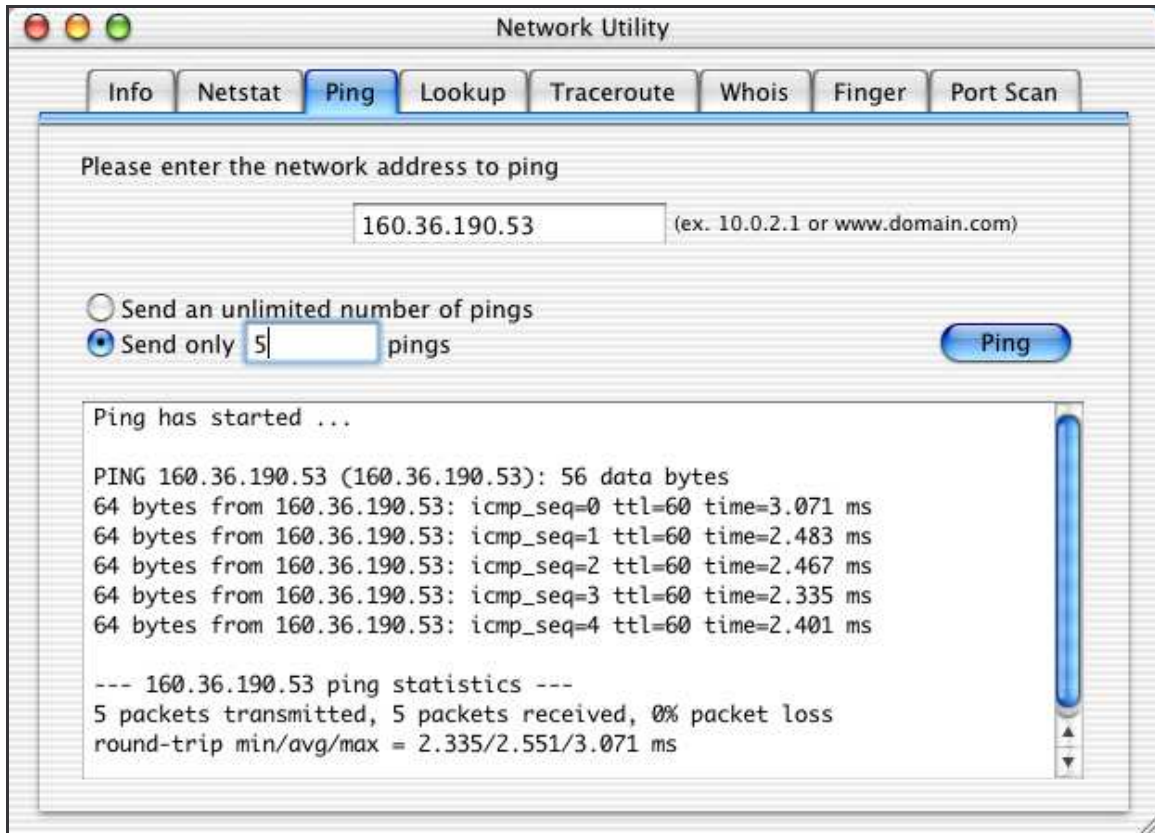
1. Info tab

- a. The IP address
- b. The Hardware address
- c. In the example below
 - i. The Hardware address is 00:30:65:01:de:f9
 - ii. The IP address is 160.36.251.5.



2. Ping

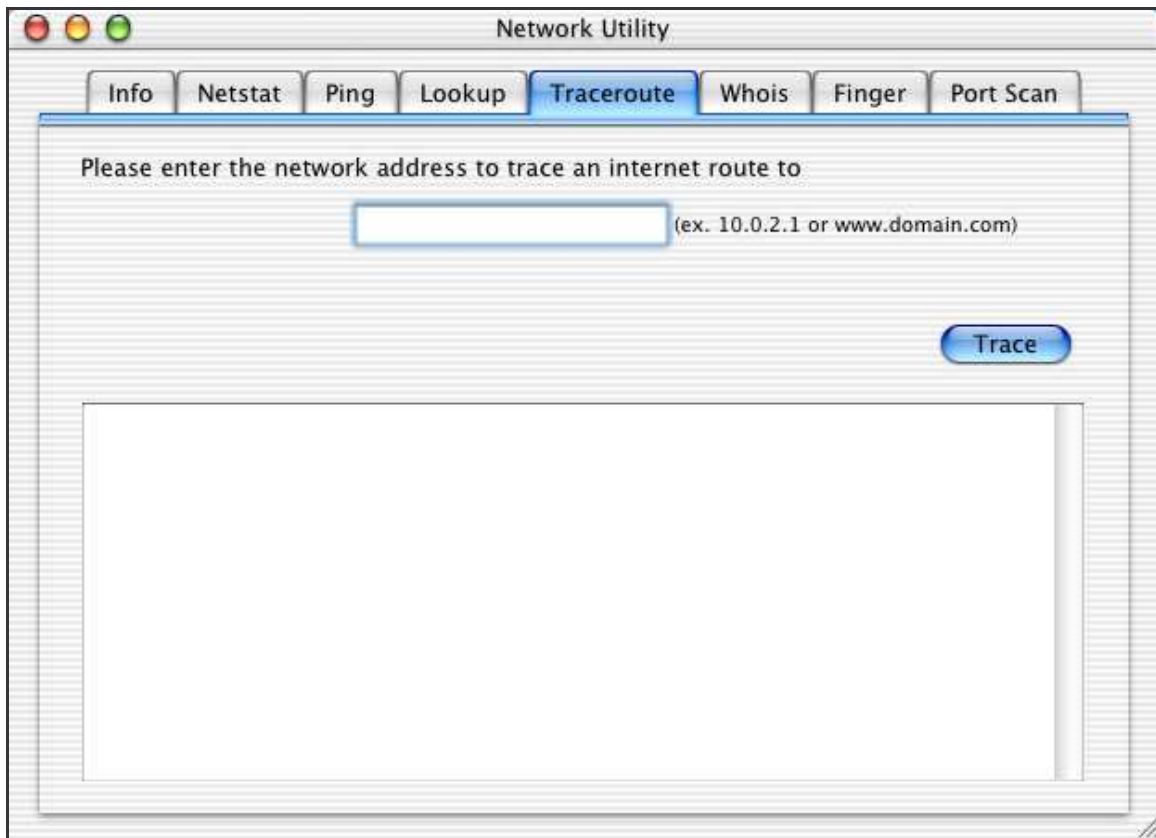
- a. Used to ping other computers or sites



In the example above, the IP address was used to ping a printer. The ping was sent 5 times. You can change this to ping more times (the default is 10) or to ping an unlimited number of times.

3. Traceroute

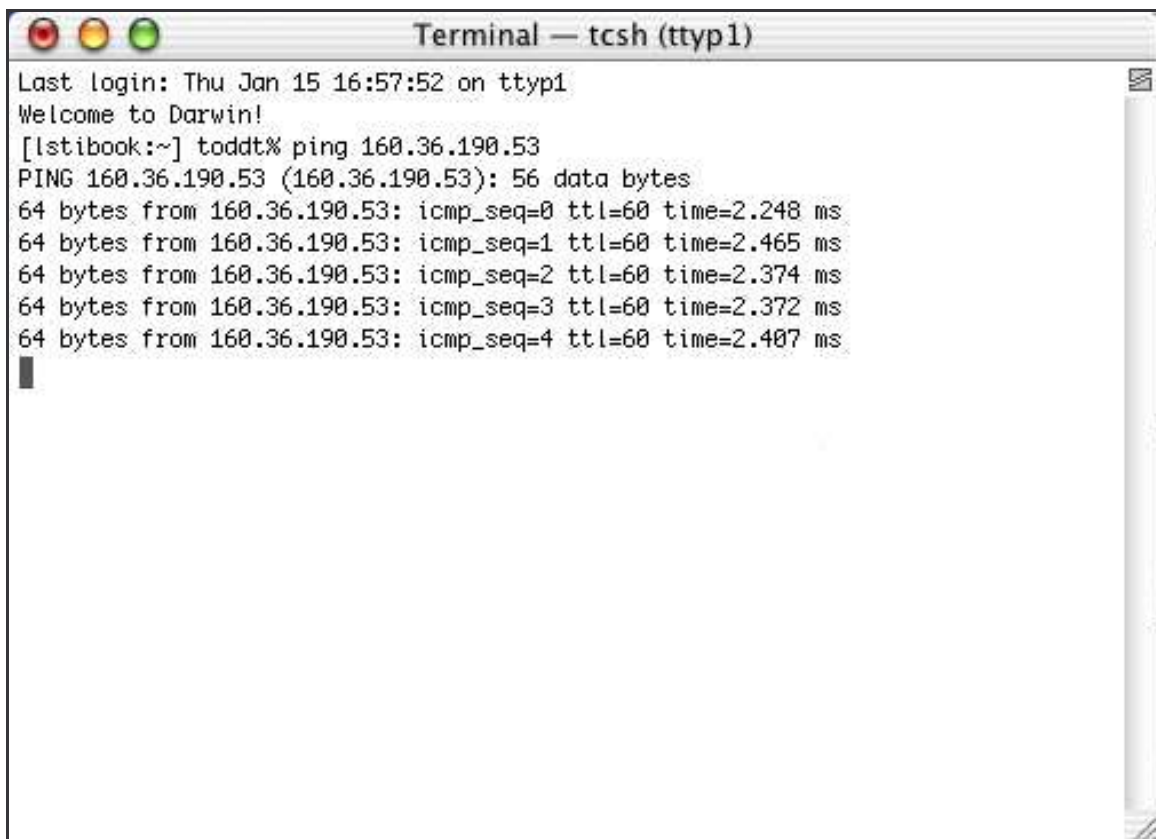
- a. Used to trace a ping route



Terminal



- Command line interface like the cmd window on PCs.
- Used to ping other computers, printers, or sites.
- Note: It will ping indefinitely until you stop it.



A screenshot of a macOS Terminal window titled "Terminal — tcsh (tty1)". The window shows the following text:

```
Last login: Thu Jan 15 16:57:52 on tty1
Welcome to Darwin!
[lstibook:~] toddt% ping 160.36.190.53
PING 160.36.190.53 (160.36.190.53): 56 data bytes
64 bytes from 160.36.190.53: icmp_seq=0 ttl=60 time=2.248 ms
64 bytes from 160.36.190.53: icmp_seq=1 ttl=60 time=2.465 ms
64 bytes from 160.36.190.53: icmp_seq=2 ttl=60 time=2.374 ms
64 bytes from 160.36.190.53: icmp_seq=3 ttl=60 time=2.372 ms
64 bytes from 160.36.190.53: icmp_seq=4 ttl=60 time=2.407 ms
█
```