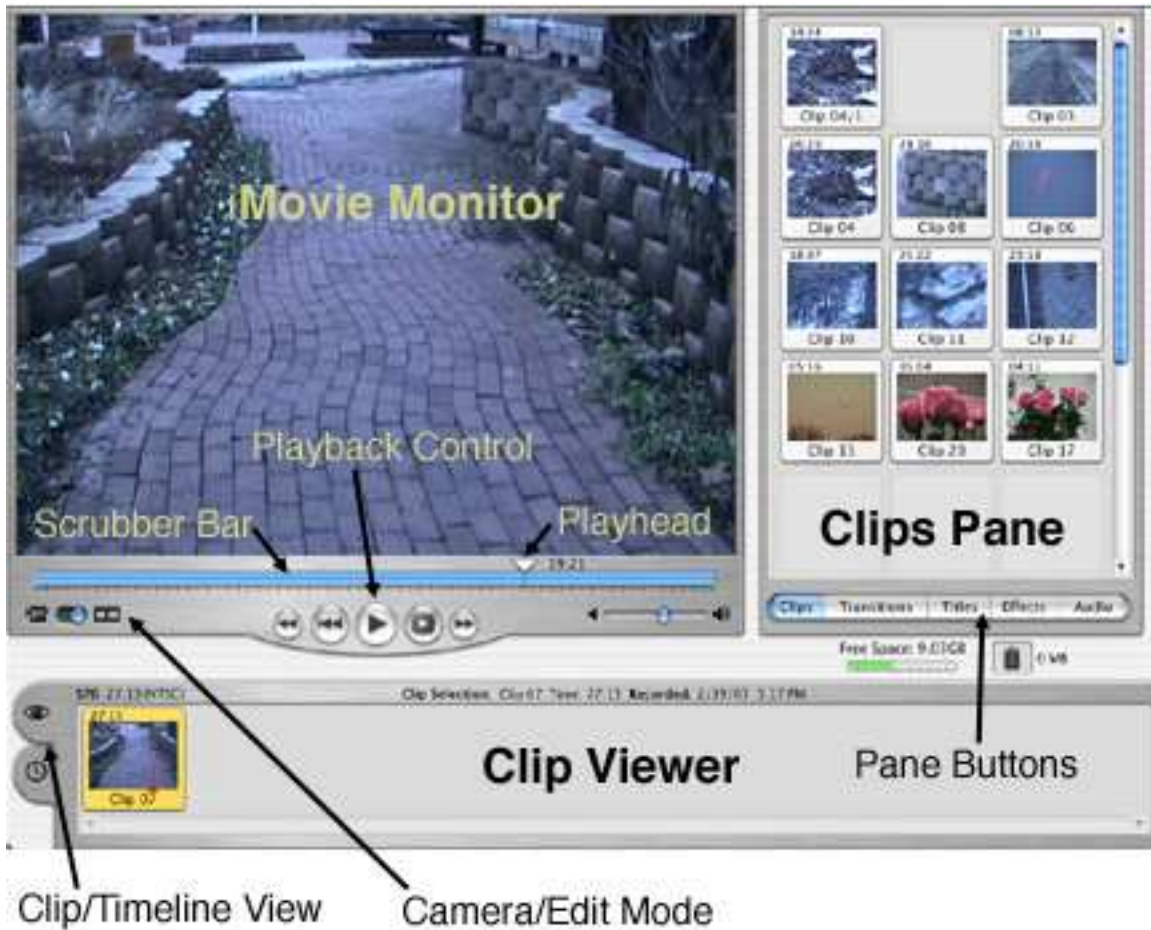


iMovie

iMovie is used to make digital videos that can be viewed on the Web or burned to a DVD. This tutorial will cover the basic features of iMovie.

The Interface



iMovie Monitor

Preview clips that are in the **clips pane**.

Clip Viewer

Move clips here for editing. Shows the order in which the clips are played.

Clips Pane:

Video footage and still clips are imported here before being moved to the **clip viewer** for editing.

Scrubber Bar

Scrollbar that lets you move anywhere in a single clip or the whole movie.

Playhead

Shows where you are in the clip or movie. Move using the arrow keys or the **playback controls**.

Playback Controls

Use these to play a clip or movie at normal speed.

Camera/Edit Mode

Capture video in camera mode and edit in edit mode

Clip/Timeline View

Clip view is where transitions and titles are added.
Timeline view is where audio is added

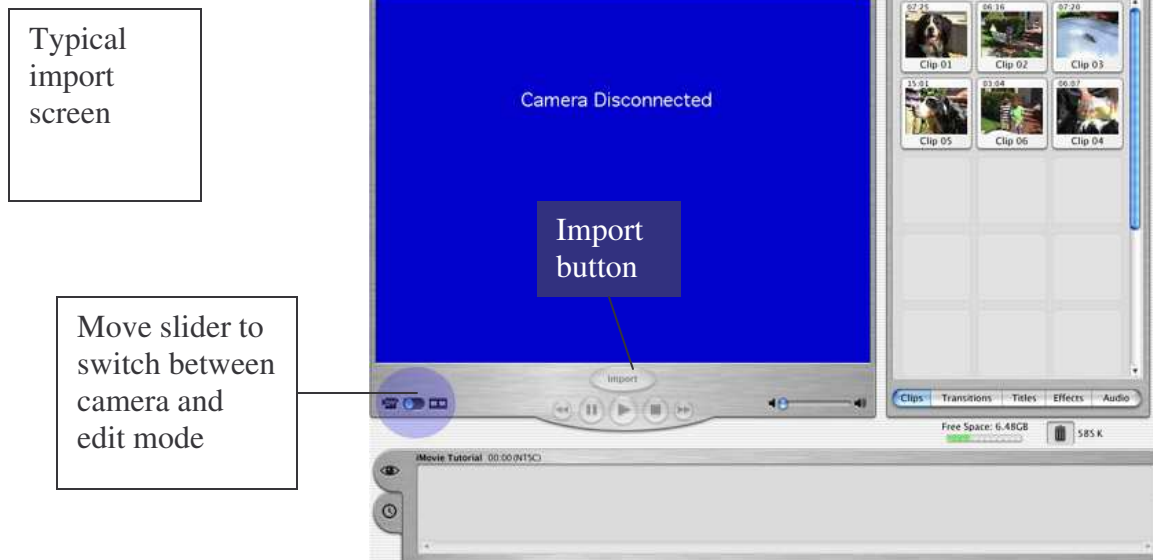
Pane Buttons

Use these to change to different movie panes when editing.

Starting a new project

- The first time iMovie is opened, it will ask if you want to open an existing project or start a new project.
- Once a project has been started and saved, iMovie will automatically open the last project worked on, unless that project has been removed.
- The save a new project:
 - Choose a name
 - Select a location to save the file. A project folder with all the files will be created by iMovie.

Importing Video



- Connect the digital video camera using a FireWire cable. Several are included in the cart.
- Make sure the camera is set to **VCR mode** and is turned on.
- Switch iMovie to **Capture mode** by moving the blue button to the camera icon.
- “Camera Connected” will appear in the iMovie Monitor. In the example above no camera is connected.
 - If this does not appear than something is not connected correctly or something is not working correctly.
 - Check that the camera is on
 - Check the FireWire connections.
- Using the **playback controls**, rewind the tape.
- Click **play** to start the previewing the tape.
- Click **import** when the Monitor displays a scene that you want to import.
 - Note: You do not need to import the whole video.
- The video will import to the **clips pane**. It will break into individual clips whenever the camera was shut off or paused while shooting the video.
 - Note: 1-2 minutes of footage is about 1 GB so watch your available disk space.

Editing Video

Previewing Movie Clips

- Select a clip by clicking on it.
 - Clips can be in the **clips pane** or the **clip viewer**.
 - A preview of the clip will show in the **iMovie Monitor**
- Use the right or left arrow keys to move frame by frame
- Use the **playback controls** to play the clip at normal speed.

Removing unwanted parts of a clip

- Place the clip in the **clip viewer**.
- Move the playhead to the point you want to cut the clip.
- Choose **Edit** from the menu bar.
- Choose **Split Video Clip at Playhead**.
- Select the unwanted part and delete it.
 - Note: the unused portion can also be dragged back to the **clips pane** for later use.

Adding Titles

Note: When a title or transitions is added to the **movie timeline**, iMovie will render the clip, which is indicated by a red bar under the clip or transition. Rendering means that the clip is modified to accommodate the new effect. You can work on other parts to the movie but the movie will not play until the clip is finished rendering.

To add effects

- Click the **Titles** button to open the **titles pane**
- Choose a style and type your text.
- Change the font, text size, and text color if necessary.
- The **Speed slider** sets how fast the title moves in and out of the movie
- The **Pause slider** determines how long title will pause on the screen.
 - Note the over black option will create a black slide for the title.
- Use the **preview** button to see what the title will look like.
- To place the title, simply drag the icon to the location in the movie where you want the title to appear, either in front of or on a clip. For instance, in the



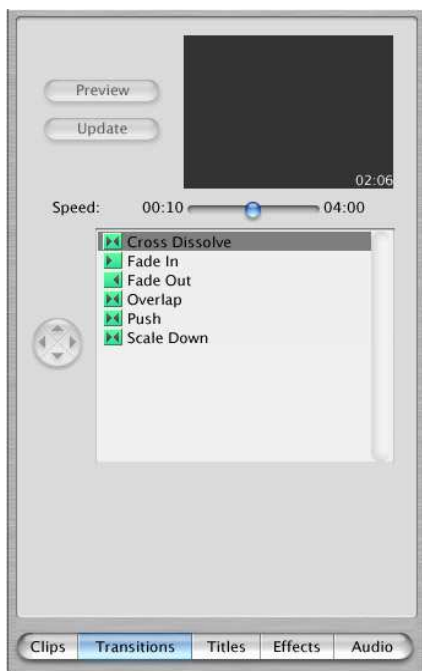
example above you would click and drag the “Bounce In To Center” icon to the movie

Adding Transitions

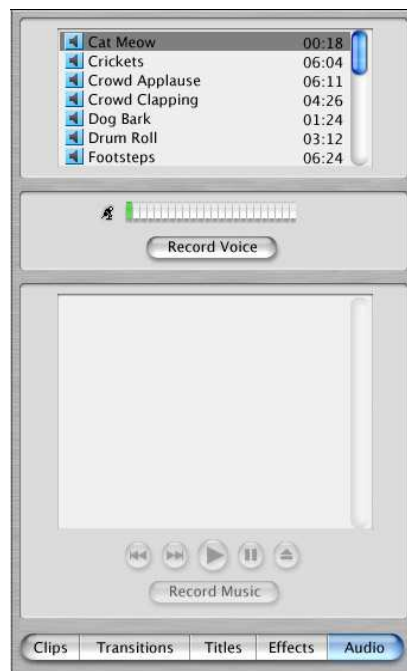
- Click the Transitions button to open the Transitions pane.
- Select transition
- Speed determines how long the transition lasts.
- The update button is used to update a clip if you want to change the duration or type of
- To add the transition to the movie
 - Click and drag the transition icon between two clips in the clip viewer.

Adding Sound

- Audio clips must be in the following formats: AIFF, MP3, or WAV.
- Sound can be added to a movie in a couple of different ways.
 - File . Import. Chose the file and click OK
 - In the Audio Pane
 - Select a file from the iTunes Library
 - Record a voiceover
 - Select an iMovie sound effect
- The sound tracks are viewable in time line mode. Audio tracks are added in one of the available tracks and can be dragged to a new location.



Tranistions pane



Audio Pane

Adding Clip Effects.

- Go to the Effects pane
- Drag the effect to a clip.

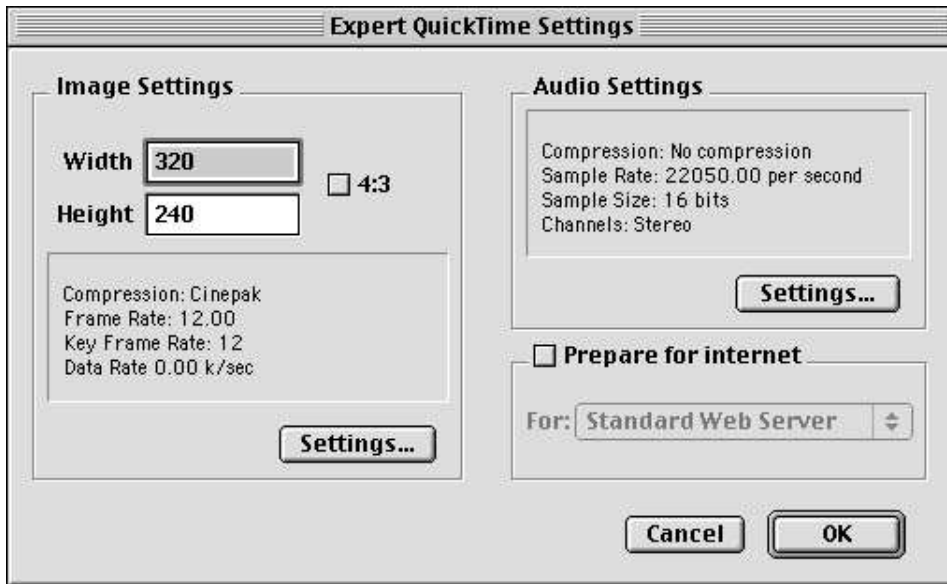
Exporting a movie

Go to File. Choose Export. There are three options



- Export to camera
 - Make sure the camera is connected and has a DV tape in it.
 - The movie will be copied back to the tape.
- DVD
 - This creates a file that can be burned to a DVD.
- Third QuickTime
 - This will create a QuickTime movie
 - Choose a preset size or create your own custom settings.

Movie Settings



Compression settings

- MPEG-4 is the current Standard for web movies
- Sorenson Video will create a high quality movie while keeping the file size small.

Movie Frame Size

- This is the size of the movie in pixels. Keep in mind that as the dimensions of the movie increase, the file size will also increase. For instance, a web movie might be 500K in size while a CD movie might be 20 MB in size.

Frame Rate

- This is the number of frames per second. The higher the number the larger the file size of the movie but the higher the quality.
- Name the file and then export it. This will take a few minutes depending on the length of the movie. Don't do anything else on the machine while a movie is rendering as it take all the processor speed of the movie to do that.

For more information on using iMovie visiting the apple site or check the help menu in iMovie.